

LED 8 inch square Recessed Downlight

QUICK FEATURES

- IC Rated
- Available at 120-277V
- Thermally protected, high efficiency driver standard
- Wet Locations listed (Not suitable for coastal / salt water area)
- cUL listed / ENERGY STAR certified
- RoHS compliances
- Tested in accordance with IESNA LM79 & LM80
- 5 year warranty

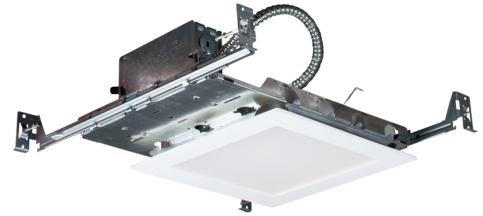


PERFORMANCE DATA

Input Voltage	120-277V
Input Power	19W
Frequency	50 / 60Hz
T Ambient	-30°C ~40°C (-22°F ~104°F)
CRI	≥90
C C T	3000 K
Lumens	1350 lm

(all values at 25°C without a dimming control in circuit)

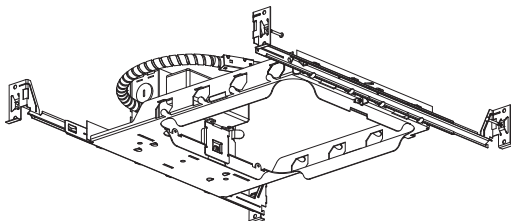
LED 8 inch Square Frame



LED 8 inch Square Trim



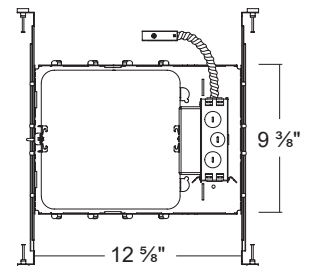
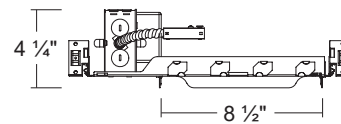
FRAME



Dimensions

LED8SQ

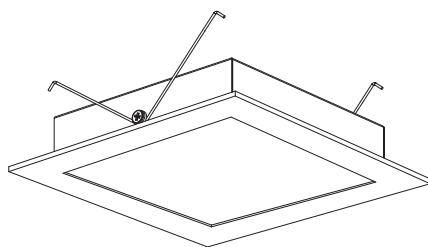
8" Square Frame



Features

- Galvanized steel construction plaster frame-in with J-Box and captive hanger bar with real nail.
- Available at 120-277V (0-10V dimming)
- LED Driver is mounted directly on the frame.

TRIM



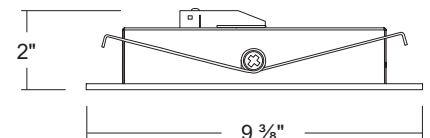
Features

- Aluminum body dissipates heat from the LED board.
- Square ring is made of plastic.
- Easy installation with torsion spring.

Dimensions

LTSQ801

8" Square Flush Lens Trim



LIST OF COMPATIBLE DIMMERS

120-277V (0-10V Dimmer Switch)		
Mfr	Model #	Dimming Rate
Lutron	NFTV	10 - 100%
Lutron	NTSTV-DV	10 - 100%
Legrand	CD4FBLW	10 - 100%
Leviton	1P710-DL	10 - 100%

ORDERING INFORMATION

Model NO.	Description
LED8SQ	8" LED Square frame / Driver with Flex. Conduit connected to J-Box directly / 2 power wires / No diecast connector / 120-277V / 0-10V Dimming
LTSQ801	8" LED Square Trim / Flush Lens / Torsion Spring